

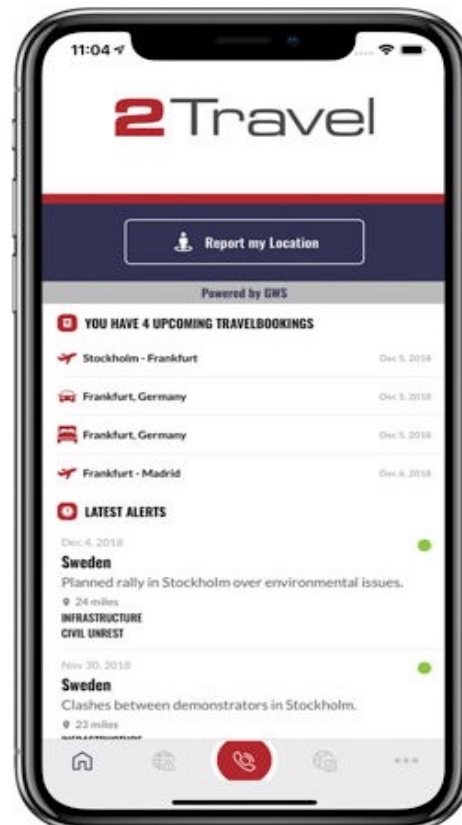
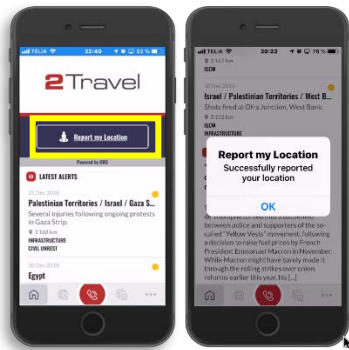
2Travel v2.0 – User Manual

Version: 2Travel v2.0 –User Manual-ISO

Latest revision: 2018-12-22

Landing Page Overview

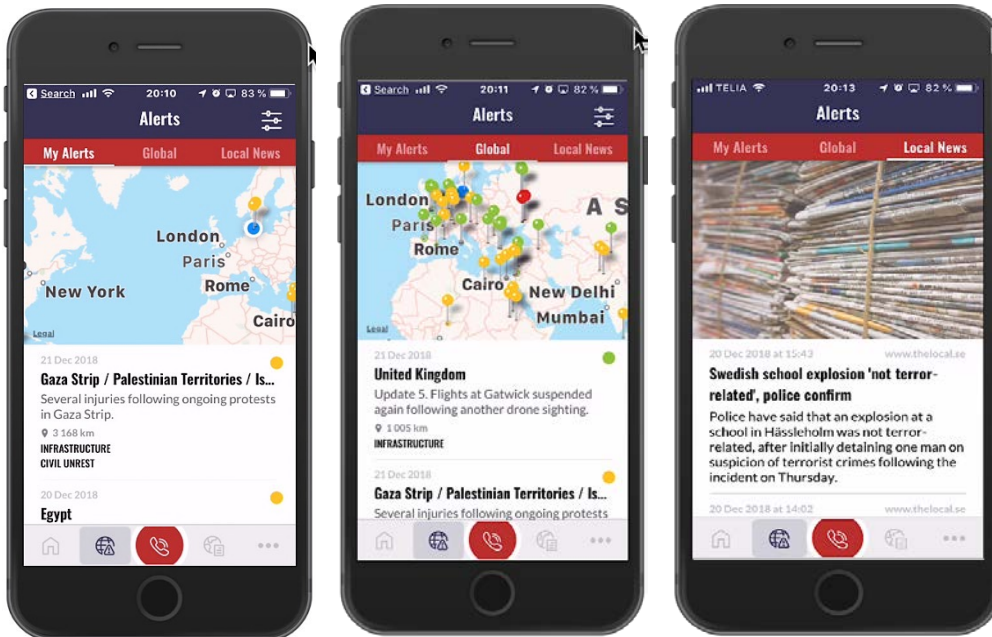
- Check-in (replaces previous versions
 - Share location via network), to be used according to company policy when arriving in a new country or otherwise reporting in position manually.
 - [Upcoming travel bookings](#)
 - [Alert feed](#)
 - In-depth reports on current issues
-
- Share location via network), to be used according to company policy when arriving in a new country or otherwise reporting in position manually



Note that the Location Services / Notifications feature must be enabled on your phone to receive all warnings and messages.

Alerts

1. Filter alert type based on severity (Low, Medium, High)
2. Alerts on map and in relation to your position
3. Local news from multiple sources



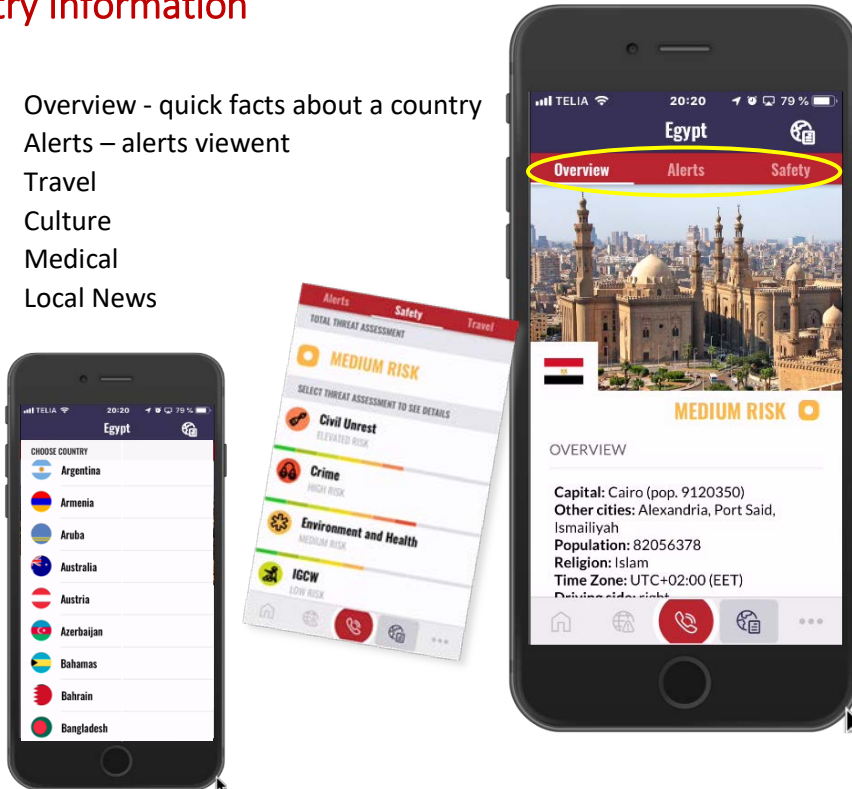
Alerts are divided into three levels:

- **High (red)** - Immediate and serious threats to your safety and / or health.
- **Medium (orange)** - Incidents or threats that may occur in the coming days or recently have occurred.
- **Low (green)** - Information that may be good to know, such as public transport disturbances, less demonstrations or updates of previous security warnings

Multilanguage translations In-depth reports, compiled by our qualified analysts

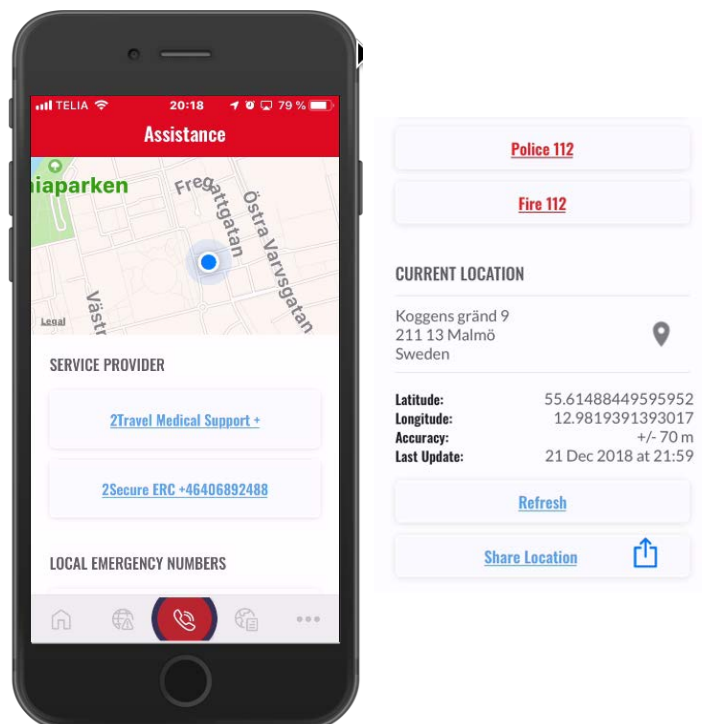
Country Information

1. Overview - quick facts about a country
2. Alerts – alerts viewent
3. Travel
4. Culture
5. Medical
6. Local News



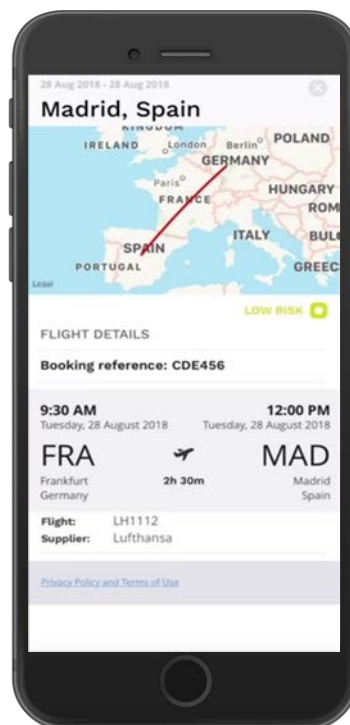
Emergency Assistance

- Local SOS and emergency numbers; all automated based on real-time location.
- Company specific assistance numbers.
- Whilst calling, 2Travel automatically notifies 2Secure Emergency Response Center (ERC) with activation of callers location and user ID for swift assistance
- Easy to share your location and alerts



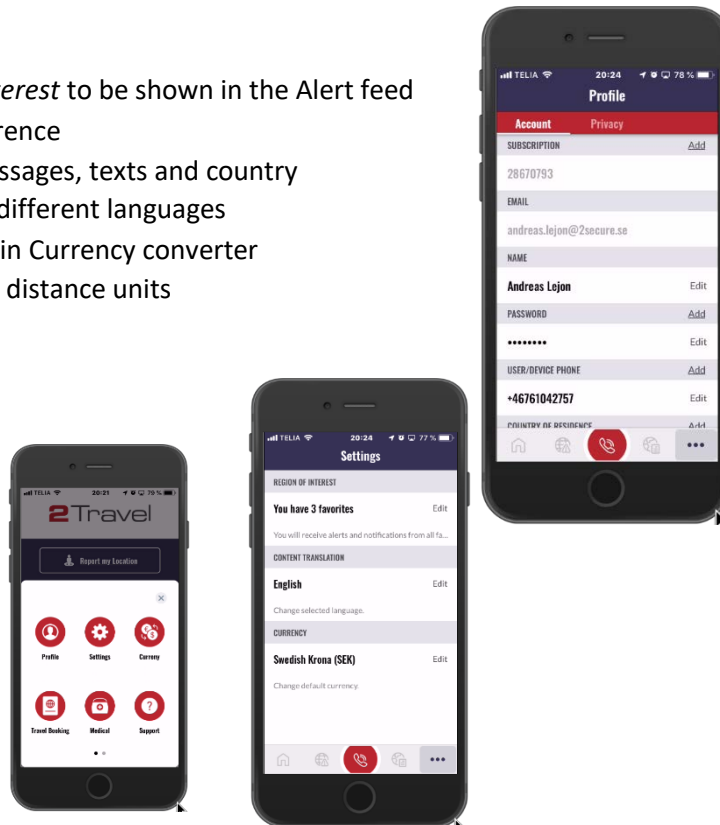
Travel Booking

- Full access of your travel bookings. Contains flights, car rental and hotel bookings.
- Pre-trip notification
- High-Risk warning and
- Incident on destination warning



Profile /Account /Privacy

- Add additional *regions of interest* to be shown in the Alert feed
- Edit content language preference
- Automatic translation of messages, texts and country information into at least 90 different languages
- Default currency to be used in Currency converter
- Set either metric or imperial distance units



Currency

Calculate currency and up to date foreign exchange rates with this currency converter. *Works offline*

Medical

Common conditions and medications. *Works offline*

Support

- To report technical bugs or problems that can occur, send report to support desk
- Request for features and function to devolved or added

